

IS MY ORGANIZATION ELIGIBLE?

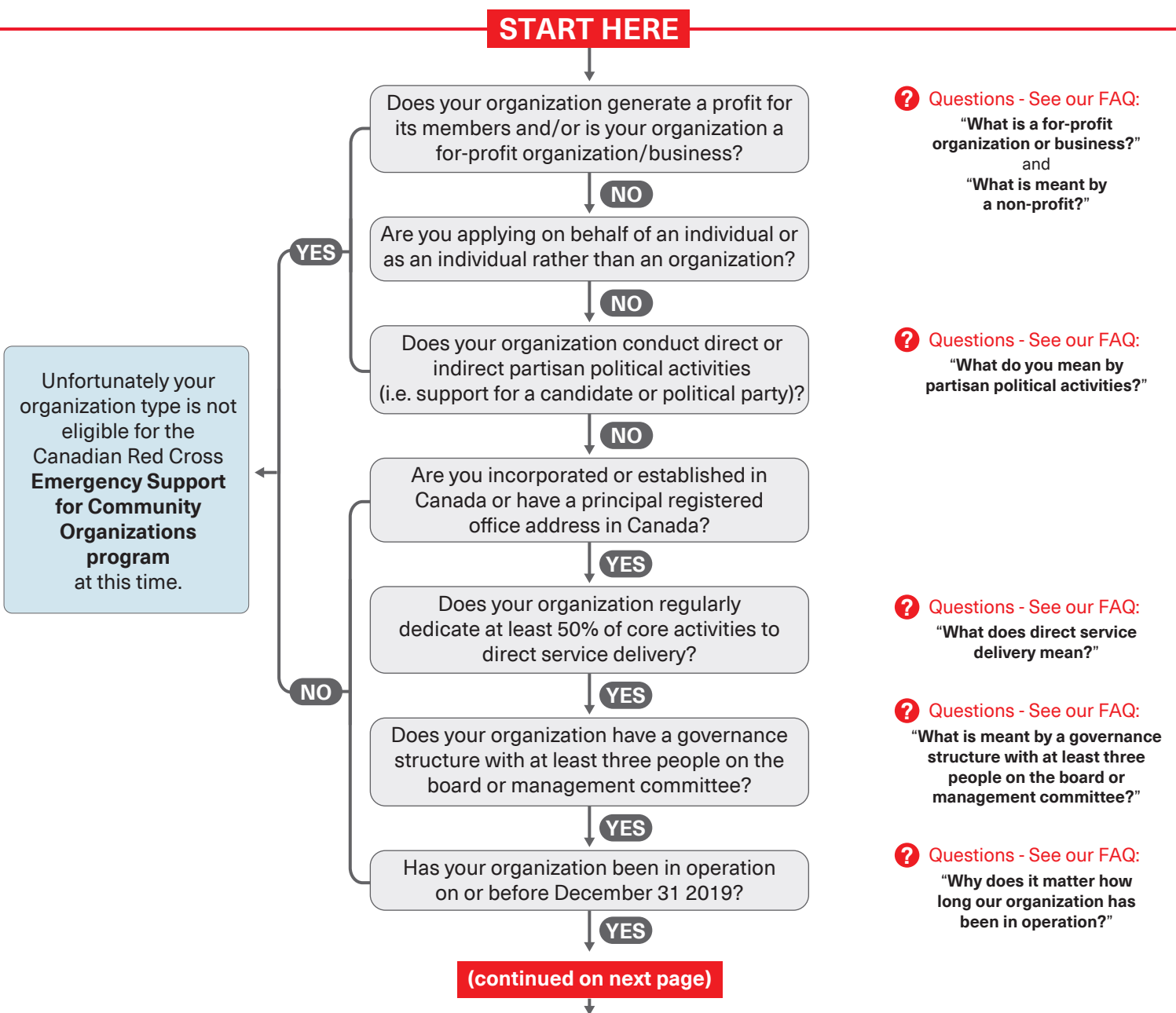
COVID-19 EMERGENCY RESPONSE SUPPORT FOR COMMUNITY ORGANIZATIONS

This will be delivered through two main program areas:

- 1) **Granting Program for Non-profits**
- 2) **Personal Protective Equipment & Training to Prevent Disease Transmission Program**

Please use this decision tree to help determine which program(s) your organization is eligible to apply for.

See the Guidance Documents for each program for more details.



(continued)

? Questions - See our FAQ: "What is meant by a non-profit?"

Are you a non-profit?

YES

You can apply for the **Granting Program for Non-profits** and the **Personal Protective Equipment & Training to Prevent Disease Transmission Program**

Are you interested in the **Granting Program for Non-profits**?

YES

Does your organization have internal accountability measures such as practices and procedures for internal controls and accountability?

YES

! Check the Eligible Activities and the Ineligible Activities in the **Granting Program** for Non-Profits Guidance Document before applying.

Are you a registered charity or qualified donee?

YES

You are able to apply for **Personal Protective Equipment & Training to Prevent Disease Transmission Program**

Are you interested in **FREE Personal Protective Equipment & Training to Prevent Disease Transmission**?

YES

Does your organization have internal accountability measures such as practices and procedures for internal controls and accountability?

YES

Does your organization work with clients in low- and medium-risk environments?

YES

? Questions - See our FAQ: "What is a registered charity?" and "What is a qualified donee?"

? Questions - See our FAQ: "Why is my registered charity not eligible for the Emergency Response Support?"

! Your organization's unrestricted cash reserves will be considered as an indication of financial vulnerability.

? Questions - See our FAQ: "How do I calculate our annual revenue for eligibility and how do I know what to include?" and "How do I calculate the ratio of unrestricted cash to the total annual operating expenditures to understand how my application will be considered?"

? Questions - See our FAQ: "What are low- and medium-risk environments?"

Please apply HERE

This program is focused on supporting organizations delivering critical community-based supports to vulnerable populations in Canada, and organizations addressing a pressing social inclusion or wellbeing need. For more guidance please see the Guidance Documents for each program.